

MID IOWA
GROWTH PARTNERSHIP
LABORSHED AREA

Information compiled by Iowa Workforce Development using Laborshed data released 2017.

THE STATS: W A G E S

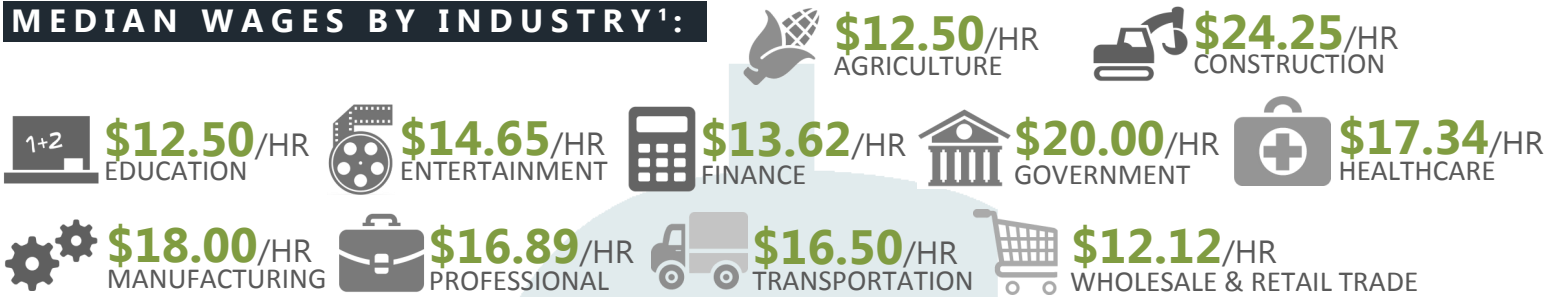
EMPLOYED

\$15.14/HOUR
\$59,000/YEAR
MEDIAN WAGES

53.5% EARN AN HOURLY WAGE | 30.9% EARN AN ANNUAL SALARY | 4.2% EARN A COMMISSION

Alternative compensation types were reported that are not delineated in the above breakout.

MEDIAN WAGES BY INDUSTRY¹:



MEDIAN WAGES OF THOSE **UNLIKELY** TO CHANGE EMPLOYMENT:
\$16.45/HR & \$60,000/YR

\$14.00/HOUR
\$55,000/YEAR
MEDIAN WAGES

EMPLOYED, LIKELY TO CHANGE EMPLOYMENT

MEDIAN WAGES BY OCCUPATIONAL CATEGORY² & GENDER:



WAGE THRESHOLDS³:

OVERALL:

\$17.00 TO \$20.00/HR & \$62,960 TO \$65,000/YR

BY OCCUPATIONAL CATEGORY³:



²Insufficient data available to report hourly wage information within the agricultural occupational category. ³Range to attract 66% to 75% of applicants.

UNEMPLOYED, LIKELY TO ACCEPT EMPLOYMENT

LOWEST MEDIAN WAGE
WILLING TO ACCEPT:
\$11.00/HOUR